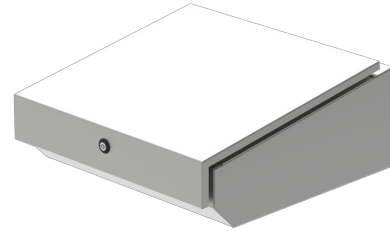


Pulpet Console

301001



Product description

Control consoles are variable in height by using different heights on base cabinets or columns.

The consoles are made of 2 mm cold-rolled sheet steel.

The mounting plates are made of galvanised unpainted sheet metal.

Important:

The console section (EPP 20) can also be screwed directly to the wall or to the doors and back of the floor cabinets.

Surface treatment

Powder coating with textured surface, RAL 7035 (grey).

Construction

The separate console section can alternatively be mounted on 2 different heights of cabinets, depending on whether the operator is to sit or stand. It can also be mounted directly on columns. The console is available with an add-on enclosure with space for monitors and the like.

The console lid is equipped with a gas damper for keeping open and the enclosure is equipped with a bracket for mounting DIN rails and the like. The base cabinets consist of modified AES and AEO cabinets with a fixed back panel and a loose insert plate. All locks are in DIN standard with a 3 mm pin. The column is equipped with internal anchor irons for attaching cables.

The base cabinets are supplied with a plinth – 100 mm high.

Produktlänk

http://www.elkapsling.se/en/product/pulpet-console/?attribute_pa_bestallningsnummer=epp-20-50-50-en

More information

- Article number: 301001
- Order number: EPP 20 50 50
- Type: Pulp part
- Dimensions height x width x depth (mm): 200 x 500 x 500
- Weight (kg):